



VICKIE DANIELS
AS MAMA



DOMINIQUE MOON
AS LILLIAN



CLARISSA TODD
AS NELLY



TRACY NAKIGOZI
AS LIL' MAMA

ZORA HOWARD'S STEW

MARCH 13 - 30, 2025
DIRECTED BY LAKESHA LORENE

Four Women. Four Stories. One Savory
Journey of Laughs and Discovery.

PHOENIX THEATRE CULTURAL CENTRE
705 N ILLINOIS ST, INDIANAPOLIS, IN 46204
Tickets available at naatcinc.org/season

ACTORS EQUITY ASSOCIATION

Actors' Equity Association ("Equity"), founded in 1913, is the U.S. labor union that represents more than 51,000 professional Actors and Stage Managers.

Equity fosters the art of live theatre as an **essential** component of society and advances the careers of its members by negotiating wages, improving working conditions, and providing a wide range of benefits, including health and pension plans.

Actors' Equity is a member of the [AFL-CIO](#) and is affiliated with [FIA](#), an international organization of performing arts unions.

#EQUITYWORKS



PRODUCING DIRECTOR'S NOTE

“FLAVORS OF LIFE”

BY LAKESHA LORENE

So many things come to mind in this script. It feels like family, smells like soul food. It's comfortable, yet uncomfortable. Familiar yet unfamiliar. It's a beautiful combination of spicy, sweet, savoury, salty.

All of these cooking attributes that Stew embodies, are a lot like life, this world, and variety or differences in the things we experience in life. When I was first introduced to Zora's script I was drawn to each character's story. Each of them is on their own quest to figure out what's next. Where do they go from here?

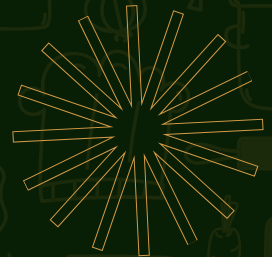
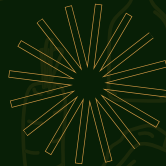


PRODUCING DIRECTOR'S NOTE

“FLAVORS OF LIFE”

BY LAKESHA LORENE

What do they keep from their past, and how can they get past the obstacles that keep staring them in the face? This play is about how these women grapple with grief through food and laughter. My personal hope is that through the humor this family uses to cope, we can think about what's next for us, as a community, as a world and how we want to show for one another.



DIRECTOR OF COMMUNITY ENGAGEMENT STRATEGY “CEMENTING OUR LEGACY”

BY LATRICE YOUNG

When I think about the theme, "Cementing Our Legacy", the first three words that come to my mind are capacity, sustainability, and inheritance. By asking reflective questions and working with the community, I am confident that we can continue making strides to creatively address the needs of Black Theatre professionals in Indianapolis and beyond.

CAPACITY

As NAATC's Director of Community Engagement Strategy, I often refer to our short and long term goals and contemplate what we can do with who and what we have right now to fulfill our mission and strategic plan. Location, time, ability, and accessibility are just a few of the things I consider when engaging with our communities.

SUSTAINABILITY

While innovation is at the core of who we are at NAATC, we are intentional about-



DIRECTOR OF COMMUNITY ENGAGEMENT STRATEGY “CEMENTING OUR LEGACY”

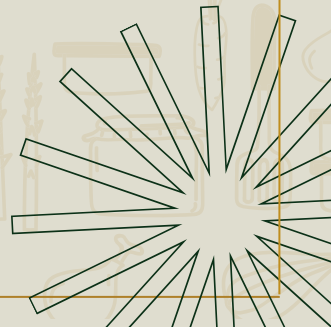
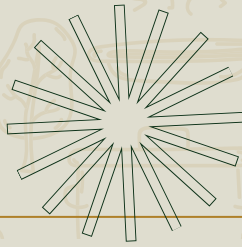
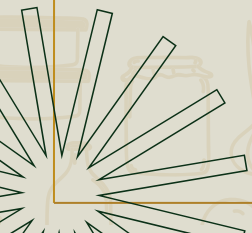
BY LATRICE YOUNG

-what new ideas or improvements we provide with our communities to sustain ourselves at this stage, with plans to exist and develop long-term.

INHERITANCE

"Cementing Our Legacy" for me is all about the Sankofa principle. We can start new ventures and move forward by acknowledging and reflecting about the communities, resources, predecessors, and strategies that came before us. One of my goals is to ensure that our blueprint can be reviewed, analyzed, and inherited as a springboard for future theatre makers and more!

The world is constantly evolving, but I am confident that together, we all can all put in the progressive work needed not to follow the trends, but to be the trend!



NAATC COMMUNITY PARTNERS



A HUB OF COMMUNITY INNOVATION, SUPPORT, AND RESILIENCE

To support, advocate for, and empower individuals, children, and families by applying educational, social, and economic resources that move members of the community towards stabilization, and self-sufficiency.

For more information:

Tel: [\(317\) 925-4231](tel:(317)925-4231)

info@flannerhouse.org

**2424 Doctor
M.L.K. Jr St.
Indianapolis,
IN 46208**



WOMEN'S FUND
OF CENTRAL INDIANA

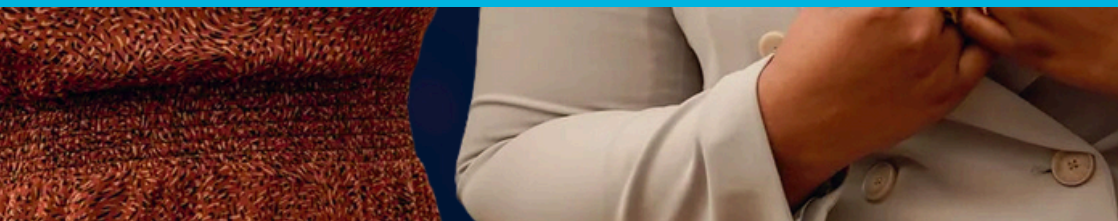
* A CICF FUND

WOMEN'S FUND OF CENTRAL INDIANA



Empowering women and girls in Central
Indiana with **equitable opportunities to
reach their full potential.**

womensfund.org



NAATC COMMUNITY PARTNERS

Citizens Energy Group proudly supports the
**Naptown African American
Theatre Collective**

Championing creativity, nurturing emerging talents, and celebrating African American cultural heritage through captivating artistry.



Women & Mental Health Movement



Therapist MFTR
Kamona Coleman-Mundy

Saturday, March 22, 2025

9:30 AM - 10:00 AM Breakfast
10:00 AM - 12:00 PM Session

Amazing Grace Christian Church

**8100 E. 16th St.
Indianapolis, IN 46219**



Church Hostess
Lady Greta Adams

Dr. Dwight Holland
Co-founder

Dr. Preston Adams III
Co-Founder

WE ARE PLEASED TO PRESENT
S.T.E.A.M ACADEMY CAMP

Marian and Butler Universities are launching a STEAM academy for grades 6-9, emphasizing character development, civic-mindedness, and global perspectives through hands-on learning on a college campus.

DAILY SCHEDULE

Monday: Marian University (Arts and STEM activities)

Tuesday: Field trip to Butler University (Arts and STEM activities)

Wednesday: Field trip focused on community engagement and global awareness

Thursday: Graduation and family engagement event (held at Marian University)

DATES AND LOCATION

June 7-10, 9am-4pm each day.

Registration check-in and check-out will be at Marian each day.

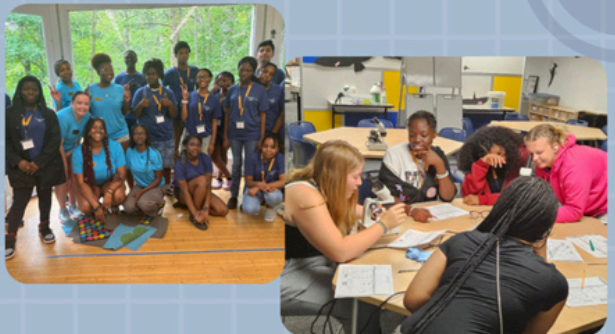
Transportation will be provided when campers go off of Marian University's campus

TUITION:

\$250 *Full, need-based tuition assistance is available.

Please apply at the time of registration.

SCAN ME



NAATC HAS PARTNERED WITH
THE SISTERHOOD SIT-IN TO SUPPORT

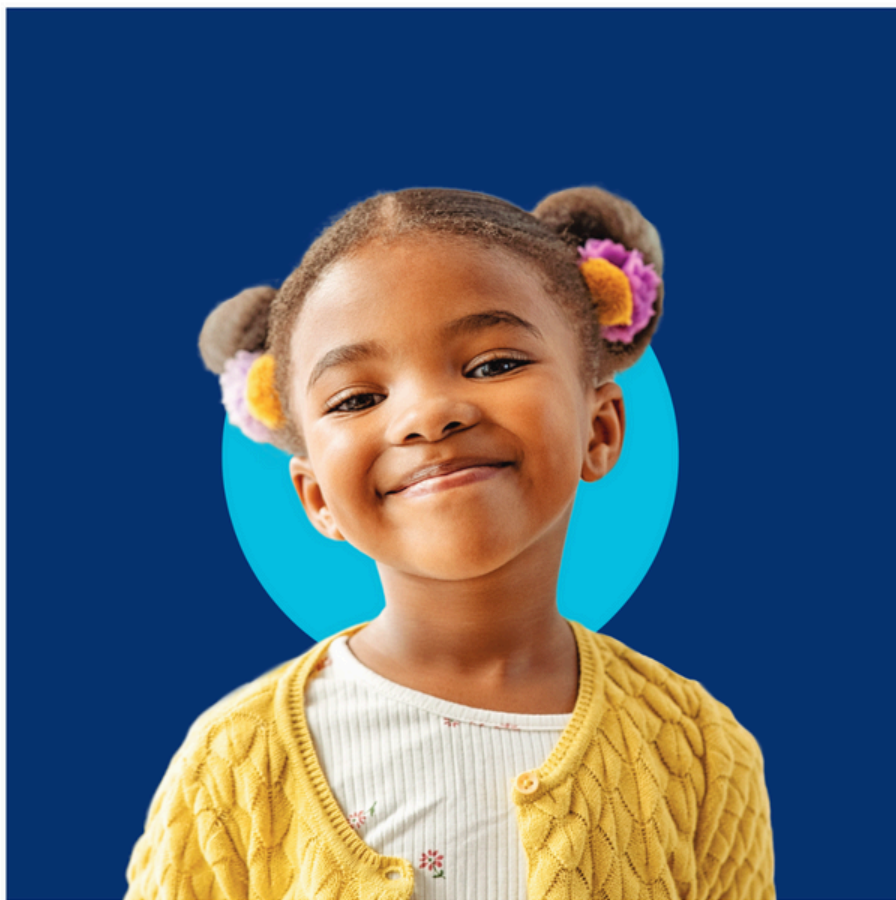
ROOTED 2025

A MOVEMENT HIGHLIGHTING THE POWER OF THE
BLACK DOLLAR AND **UPLIFTING** BLACK WOMEN-LED
BUSINESSES, ORGANIZATIONS, AND INITIATIVES.

FROM APRIL 10-19, **ROOTED 2025** WILL LAUNCH THE
LARGEST DIGITAL SIT-IN, UNITING 100,000 BLACK WOMEN
ONLINE WHILE HOSTING 22 FREEDOM ROUTES:
ECONOMIC TOURS AIMED AT GENERATING
\$25 MILLION FOR BLACK WOMEN-OWNED BUSINESSES.

JOIN US IN THIS HISTORIC MOVEMENT BY:

- ✓ REGISTERING AT [ROOTED2025.COM](https://rooted2025.com)
- ✓ SIGNING THE PETITION AT [CHANGE.ORG/ROOTED2025](https://change.org/rooted2025)
- ✓ SUPPORTING BLACK WOMEN-OWNED BUSINESSES
- ✓ CALLING CONGRESS TO RECOGNIZE APRIL AS BLACK WOMEN'S HISTORY MONTH



Imagine IF ...
everyone in our community
had the ability to thrive.

Learn more about the Indianapolis Foundation's **Equity Imperative 2030** strategic plan and our vision at indianapolisfoundation.org.

BEHIND THE STORY

“STEW: A FAMILY RECIPE OF
LOVE, LOSS, AND LEGACY”

BY CELESTE WILLIAMS, DRAMATURG

About the Author

Zora Howard is a Harlem-bred American actress, screenwriter, poet and playwright. STEW is her debut play, which premiered off-Broadway in 2020 and was a finalist for the Pulitzer Prize for Drama. She also co-wrote and starred in the 2019 film, *Premature*.

She is a graduate of Yale University and University of California, San Diego. She has said, “...My work is in praise of all of our beauty and all of our ugliness too.”

Dramaturgy Note

STEW takes place in the fairly recent past — a past when the telephone was attached to a wall in the house.



BEHIND THE STORY

“STEW: A FAMILY RECIPE OF
LOVE, LOSS, AND LEGACY”

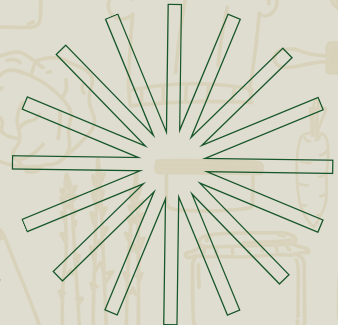
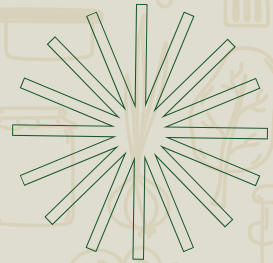
BY CELESTE WILLIAMS, DRAMATURG

That fact of time is important to this play. But it is not the only “time stamp”: These women, who represent three generations, weave in and out as they navigate the “stew” of their relationships, their shared joys, and common disappointments.

You “know” these women.

Mama, the matriarch, is the roux that thickens this family recipe, but each adds her own ingredient to the final product. Like any dish made with love, I think you will find *Stew* funny, sad, thought-provoking, and ... delicious.

— ***Celeste Williams, Dramaturg***



TRIGGER WARNINGS

01

USE OF THE “COURSE LANGUAGE” IN STEW

There is use of course language in this show, with some choice words expressed as the characters speak in passion or repulse.

02

AGE ADVISORY: 14+

May address adult topics, including violence and death. May contain or suggest mild adult situations, such as substance use, smoking or drinking. May contain direct references to sexuality.

DIRECTOR'S NOTE

"THE CROWN IN THE EVERYDAY"

BY LAKESHA LORENE

A play about Black women and the significance of the mundane has an understated regalness to it. In many households, the woman holds down the fort. Not only does she care for the family, she cares for the soul, their issues, their challenges. But who cares for her?

Who is she comforted by and what is she comforted with when she needs the support she's been giving to everyone else? In this story of transition, we are invited to explore what happens next when we face our fears and do our best to end the cycle. The playwright, Zora Howard gives us a glimpse into the homes of many with the song and dance that is not only learned but—



DIRECTOR'S NOTE

“THE CROWN IN THE EVERYDAY”

BY LAKESHA LORENE

—sometimes inherited. In sharing the story of Mama, Lillian, Nelly and Lil' Mama we learn through this family, how we can care for one another better, and how much communing and spending time together can help us heal.



ARTWORK BY KAYLA MARY JANE



NAPTOWN AFRICAN AMERICAN THEATRE COLLECTIVE

COOKBOOK

2025

STEW over our delicious recipes in **NAATC's brand-new 2025 Cookbook!** Our incredible NAATC family has poured their hearts (*and secret ingredients!*) into this special collection of custom recipes.

**SUPPORT OUR ACTORS, CREW,
AND MISSION BY PURCHASING
YOUR COPY FOR JUST \$15!**



STEW ACTING COMPANY

ASTERISK* DENOTES MEMBER OF THE
ACTOR'S EQUITY ASSOCIATION



RENÉE LOCKETT* (MAMA)

Renée Lockett, a 40-year Chicago veteran of stage and screen, is excited to join the cast of Stew at NAATC. Recently, she appeared in *Wipeout* at Constellation Stage and Screen in Bloomington and currently plays recurring character Just Alma in the MGM+ series *Emperor of Ocean Park*. "Blessed to still be living my dreams."



DOMINIQUE MOON (LILLIAN)

Dominique Moon is a versatile actress, writer, director, and producer with over 15 years of experience, recognized for her role as Vanessa in Showtime's *The Chi*. She is a devoted wife and mother who enjoys writing, watching movies with her family, and playing with her son. Additionally, she appears on "The Audition" on YouTube, produced by her company, Autumn Reign Productions.



CLARISSA TODD (NELLY)

Clarissa Todd is a Black multi-hyphenated performer in Indianapolis, skilled in acting, singing, dancing, and writing. She teaches at the Asante Arts Institute, where she began her theater training at 15. Recent roles include Dussie Mae in NAATC's production of *Ma Rainey's Black Bottom*, Jaida Hall in *Mission Control*, and Landonia Brown in *Promised Land*. Clarissa is committed to amplifying Black voices and creating impactful work.

STEW ACTING COMPANY

ASTERISK* DENOTES MEMBER OF THE
ACTOR'S EQUITY ASSOCIATION



TRACY NAKIGOZI (LIL' MAMA)

Tracy Nakigozi is thrilled to debut with NAATC in Stew as Lil Mama. She's worked with Indianapolis Shakespeare Company, Summit Theater, IndyFringe, and Theater Unchained, earning a Broadway World Indianapolis nomination for The Ballad of the Book Women. Tracy thanks NAATC, LaKesha Lorene, the cast and crew, her mentors, and parents for their support. She dedicates this performance to her late Aunt Agnes Namubiru and to the women whose memories and strengths have "stewed" her into the woman she is today.



VICKIE DANIEL (UNDERSTUDY - MAMA)

Vickie Daniel is a multidisciplinary artist skilled in vocals, performing arts, musical curation, creative writing, poetry, fiber arts, and sacred creative healing arts. She curates performances celebrating her community, including Lockefield Gardens, Indiana Ave, and Indianapolis Public School 23. Vickie is the official reenactress of Madam C. J. Walker and has performed at venues like The Madame Walker Theatre, Clowes Memorial Hall, Indiana Historical Society, and Indiana Humanities. This is her first NAATC performance. A retired RN with 40 years of experience in child and adolescent psychiatry and healthcare, she thanks GOD, NAATC, her family, her creative community, her true friends, and YOU!

STEW ACTING COMPANY

ASTERISK* DENOTES MEMBER OF THE
ACTOR'S EQUITY ASSOCIATION



ANILA AKUA (UNDERSTUDY - LILLIAN)

Anila Akua has performed locally at Fonseca Theatre in Mudrow and as Marie Antoinette and the Magical Negroes by Terry Guest. She has appeared in several stage productions and films, is Meisner trained, and is pursuing a professional theatre career. Anila recently joined the board of the Naptown African American Theatre Collective Inc.



DA'KEISHA BRYANT (UNDERSTUDY - NELLY)

Da'Keisha Bryant has been acting professionally in Indianapolis for over 20 years. Known for her big, bold personality, she has appeared in numerous productions across various theaters. Da'Keisha extends her heartfelt thanks to her family for their unwavering support and to NAATC for the opportunity to be a part of this incredible cast and family.



ZAKEYA BROWN (UNDERSTUDY - LIL' MAMA)

Zakeya Brown has been actively involved in the Indianapolis theatre scene her whole life. When she isn't performing, she enjoys spending time with her family or capturing moments through photography. We appreciate your presence at our show!

STEW PRODUCTION CREW



LAKESHA LORENE - DIRECTOR & PRODUCER

Lakisha is so excited about directing this amazing cast for the 2024-2025 Cementing Our Legacy Season for the Naptown African American Theatre Collective. An artist and arts leader Lorene's directorial work spans over the last 10 years directing independent film, commercials and theatre productions. She is grateful to God for his continued grace, her family and friends for their love and support and every person who is positively impacted by this work. Visit lakeshalorene.com for more on her work.



IROROBEJE CRYSTAL OWHOSO-MADDOX -
PRODUCTION MANAGER

Irorobeje Crystal is excited to celebrate her fourth production with Naptown African American Theatre Collective, Indy's first Black Equity Theatre. She has over six years of experience with Live Nation Entertainment and has worked in modeling, commercial, print, digital advertising, and podcasting. Notable performances include *To Kill a Mockingbird* at Booth Tarkington Civic Theatre and film project *Pens to Pictures*, directed by Chinonye Chukwu (*Till*). Irorobeje is also a proud mother of four, raising her toddlers and bonus children with her husband, Steve. She gives all glory to God. @irorowarrior

STEW PRODUCTION CREW



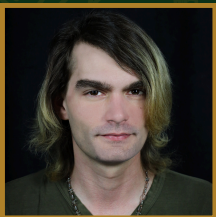
KAYA HILL, ESQ.* - STAGE MANAGER

Kayla Hill, Esq., is excited to work on her second NAATC production and deepen her connections with the Indianapolis arts community. As an attorney, she helps creatives and entrepreneurs protect their works and set up for growth. Kayla is grateful for this opportunity and thanks her mother, Terre Cross, and the other supportive women in her life.



SHANTEL BADJI- ASST. STAGE MANAGER

Shantel Badji is a visionary leader, creative innovator, and advocate for social change. Through storytelling, education, and community empowerment, she uplifts and inspires individuals from all backgrounds. As a playwright, poet, and author, Shantel uses powerful narratives for healing and empowerment. Committed to growth, she participated in NAATC's Education for All program to expand her skills and better serve the community - creating spaces where people can heal, learn, and thrive.



TIM DICK - LIGHTING DESIGNER

Tim Dick is excited to work with NAATC again! They are an Indianapolis-based designer, technician, and educator. After having spent time working in San Francisco and New York, they are excited to have planted roots again in their hometown.

STEW PRODUCTION CREW



APRIL ELLIOTT - COSTUME DESIGNER

April is a forever student and loves to learn something new daily. She is continuously sharpening her pattern making, sewing and gardening skills. When she's not creating art she's creating memories with her husband and 3 energetic sons.



MAXIMUS KEYES - SOUND DESIGNER / ORIGINAL COMPOSER

Maximus Keyes is a musician, producer, composer, studio engineer, and leader of the 'K.O. "M" Band.' Since 2022, he has combined his passion for music and theatre in light design and sound production, collaborating with The District Theatre, Indy Fringe Theatre, and Theatre At the Fort. With a creative mindset, he aims to make a positive impact on the arts and change the world through his music.



EVERETT CLAYTON - SET DESIGNER

Everett Fillmore Clayton II, born in Indianapolis, IN, is a rap artist, soul singer, songwriter, producer, playwright, contractor, and set designer. Influenced by his parents' love of the arts, he writes and produces music while managing construction work. He discovered acting, landing lead roles in plays, movies, and show choir. After moving to LA, he connected with Grammy-winning engineer David Kim and artists like Keyshia Cole and Lou Moreno.

STEW PRODUCTION CREW



DEMETRIUS COLLINS - SCENIC DESIGNER

Demetrius Collins is a leadership coordinator at Flanner House, a carpenter, and a recording artist from Indianapolis, Indiana. Currently based in Los Angeles, California, he is immersed in the music scene and leverages his experiences to create fresh and impactful opportunities for the community.



JAMES WRIGHT - SCENIC DESIGNER

James Wright, an Indianapolis-based entrepreneur and chef, brings his culinary expertise to life through his own brand and catering business. In addition to crafting delicious dishes, he collaborates with Everett Clayton on set design and fabrication.



CELESTE WILLIAMS - DRAMATURG

Celeste Williams has served as dramaturg for NAATC and has 25 years of experience as a reporter and editor across several states. After leaving journalism, she focused on writing poetry and plays. She is on the board of the Indiana Writers Center, volunteers as a tutor for homeless children, and is part of a dragon boat racing team for breast cancer survivors.

STEW PRODUCTION CREW



ASANTA FOSTER - WIG DESIGNER

Asanta is a hairstylist on Indy's Northwest side with over 2 years of professional experience, though she's been honing her skills since age 9. Born with a passion for the beauty industry, this is her second production, and she's excited and grateful for the opportunity to share her art.



FĒI - PROPERTIES MANAGER

fēi is an interdisciplinary artist who challenges perception by innovating space and reality. Her work revolves around creating impactful experiences through creative direction and intentionality. Alongside her team, Purpose Projxs, she has contributed to projects like Butter, featured in the New York Times, and set design for NAATC's inaugural play, Black Book by Austin Dean Ashford, and Ma Rainey's Black Bottom by August Wilson.



DAWANNA TAYLOR - COSTUME DESIGN ASST.

Dawanna Taylors an Indianapolis entrepreneur specializing in wardrobe styling, sewing, crochet, and painting. She teaches sewing classes and runs a summer camp for kids. Her theatre career began with NAATC as an assistant instructor for NAATC's Education for All costume design class, later becoming a production assistant for Judy's Life's Work. Currently, she is the costume design assistant for NAATC'S Stew, dedicated to fostering creativity and educating future designers.

STEW PRODUCTION CREW



ANDRÉS X. LÓPEZ - FIGHT CHOREOGRAPHER

Andrés is an advanced actor/combatant certified in all eight weapon disciplines by the Society of American Fight Directors. With over ten years of experience, he has taught stage combat internationally and choreographed fights for productions like *Vinegar Tom*, *Water by the Spoonful*, *Cyrano de Bergerac*, *She Kills Monsters*, and *Carmen*. Andrés has also lectured nationally and internationally on the history and practice of stage combat. Originally from Detroit, Michigan, you can learn more at www.andresxlopez.com.



ASHANTE SIMS - PRODUCTION ASST.

While building her career in public health, she has been deeply involved in the theatre world by attending multiple NAATC's Education for All classes. She encourages anyone curious about the courses to dive in and explore. She is grateful to begin her theater journey as a Production Assistant with NAATC! *"It does not matter how slowly you go so long as you do not stop."* – Confucius



MYLES STRONG - PRODUCTION ASST.

Myles Strong is a recent graduate of Ball State University with a degree in Telecommunications and Screenwriting. Passionate about creativity and the arts, his theater journey began at Pike Performing Arts Center & High School. This is his second production with NAATC, and he's excited and grateful for the opportunity to be part of this experience!

STEW PRODUCTION CREW



KAYLA MARY JANE - VISUAL ARTIST FOR
NAATC SEASON GRAPHICS

Kayla (She/her/hers) obtained her BFA at the Tisch School of the Arts. She has a passion for curating and contributing to projects that change the narrative, specifically of black and brown people. She is a fine artist (painter), actor, and writer whose art is in conversation with empowerment, truth, and pride. Being second generation Jamaican-Canadian has fueled the fire to expand on dreams of freedom, happiness, and belonging. She is always somewhere creating and growing her experiences as an entrepreneur, curator, actor, writer, visual artist, and storyteller.

View her artwork on kaylamaryjanear.com.



CASSIE MITCHELL - NAATC MARKETING INTERN

Cassie Mitchell is a junior at Marian University, double majoring in Graphic Design and Communication. As Marketing Manager for the Theatre Department, she has designed posters and managed social media for three seasons. She also interns with the Naptown African American Theatre Collective, promoting diverse voices in the arts. Passionate about creativity and community, Cassie collaborates with the Indy Arts Council on design and advocacy projects. Explore her work at cassaafraass.wixstudio.com/design.

THANK YOU!

On behalf of **NAATC INC.**, we send our gratitude to our sponsors who made this production possible.

Lorraine Hansberry Season Sponsorship

Indy Arts Council and the City of Indianapolis

The Indianapolis Foundation

Lynn Nottage Season Sponsor

Cheryl Waldman

Alice Childress Artist Sponsorship

Citizen's Energy Group

Purdue-Indianapolis

Women's Fund of Indiana

Dominique Morissedu Artist Sponsorship

IFF Strengthening Nonprofits & the Communities They Serve

Lumina Foundation

Glick Philanthropies

IFF Foundation

Artist Sponsors (Individual Donors)

The Byron Fund | Frank & Katrina Basile | Livia Russell | Ann M Stack
Africana Studies Department of IUPUI | David & Mimi Lepreau Jose

THANK YOU!

On behalf of **NAATC INC.**, we would like to give a special thanks to our community partners, organizations, and businesses who made this production possible!

Indy Reads

Flanner House Farms

Witherspoon Presbyterian Church

Delta Sigma Theta Sorority Inc.

Women in Mental Health

Sisterhood Sit In LLC. / Rooted 2025

Marian University

Habitat for Humanity

Elizabeth Clayton

Amber Toles

Pamela Harris

Indy Ghostlight

Loving Life Productions LLC

CEMENTING OUR LEGACY

2024 - 2025 SEASON

LOY A. WEBB'S

JUDY'S LIFE'S WORK

OCT. 17 - NOV. 3, 2024

DIRECTED BY ANG BEY

ZORA HOWARD'S

STEW

MARCH 13 - 30, 2025

DIRECTED BY LAKESHA LORENE

Your support fuels our mission to celebrate the beauty, power, and humanity of black narratives. **Scan the QR code to donate and make a difference today!**



THANK YOU FOR WATCHING THE SHOW!

WE NEED TO HEAR FROM YOU!

Please complete the *Anonymous Audience Survey* and let us know your thoughts about the show.

Your feedback is critical to us continuing to support and produce theatre for the community.

SCAN THE QR CODE FOR YOUR SURVEY!



PHOTOGRAPHY BY WAY.TOO.G